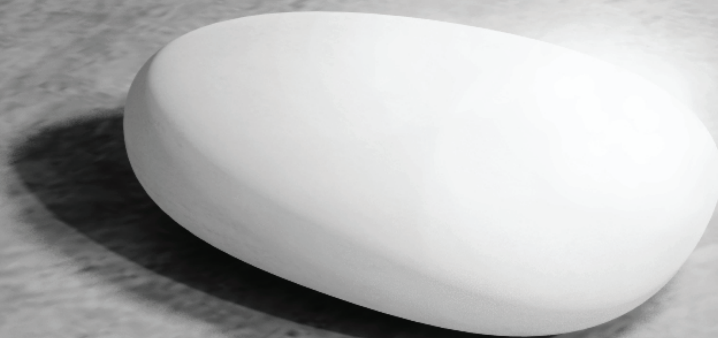


UH can be effective in UV reflection through its composition,
PC surface finishes, color, and overall durability.



UHPC

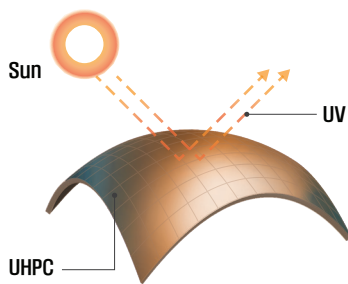
STONE SEAT

The Stone Seat is a multi-purpose free-shape seat which is available in Ultra High Performance Concrete (UHPC). Available finishes are ALFA or PSI for the Ultra High Performance Concrete (UHPC). The Stone Bench can be free standing with pedestals or cemented to the floor with threaded rods.



Product Material

Ultra High Performance Concrete (UHPC) is known for its superior mechanical properties and durability compared to conventional concrete. Its effectiveness regarding UV reflection can be attributed to several factors:



Composition:

UHPC typically includes fine aggregates, high cement content, and additives that enhance its performance. These materials can be chosen to improve UV resistance.

Surface Finish:

The surface of UHPC can be treated or finished to enhance its reflectivity. A smooth or polished surface can reflect more UV light, reducing heat absorption.

Color:

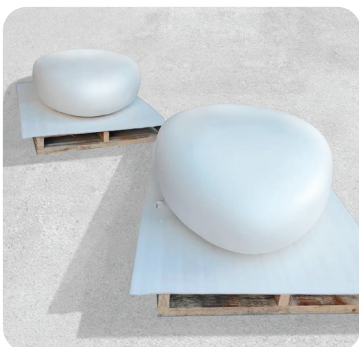
Lighter colors reflect more sunlight than darker shades. UHPC can be produced in various colors, allowing for the selection of lighter tones to improve UV reflection.

Durability:

The UHPC-Slimconcrete technology allows for the design of extremely durable, lightweight elements with a minimum structural cross-section that can withstand compression, bending, impact and wear.

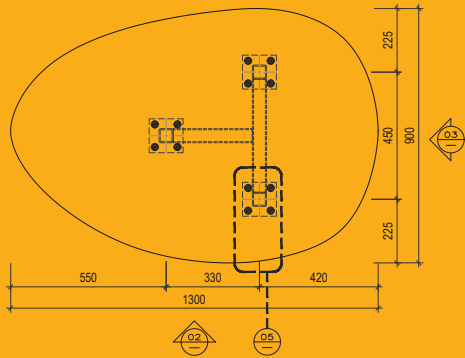
Ecological:

The lightness of the material minimises energy consumption and the use of raw materials in its fabrication. Its lightweight components make it easy and inexpensive to transport. Their 100% recyclable material composition optimises their life cycle.

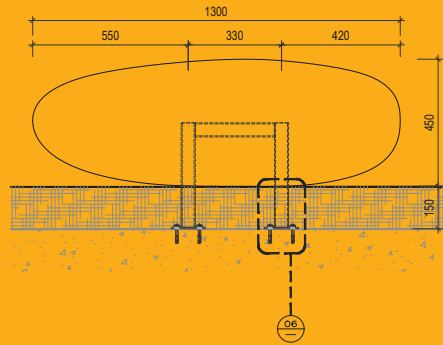


Product Detail Drawing

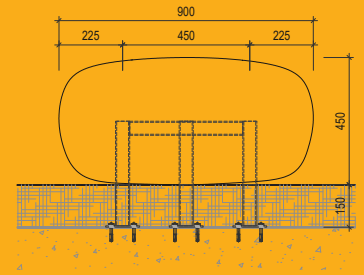
For Anchor Installation



01 PLAN(A)



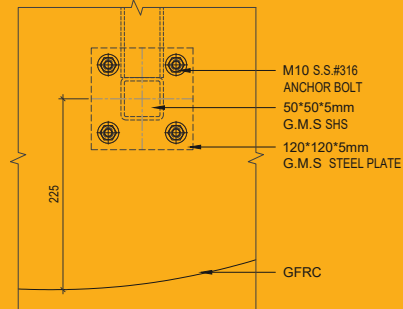
02 FRONT VIEW



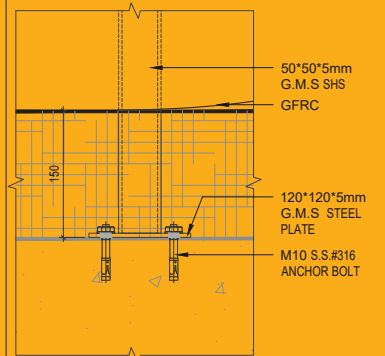
03 SIDE VIEW



04 3D VIEW



05 DETAIL



06 DETAIL

Product Specification

Materials

Body : Ultra-High-Performance Concrete (UHPC)

Dimensions

Standard Size : 1300mm x D: 900mm x H: 450mm

Weight : 386kg

* The Stone Seat can be customized size.

Color Options



White



Grey



Beige



環球建造有限公司
Global Architecture Limited



7 Sai Yeung Choi Lane,
Sham Shui Po, Kowloon, HK
Tel : +852 2789 2883
Fax: +852 2789 2728
Whatsapp: +852 6609 2883

info@globalarch.com.hk
<https://www.globalarch.com.hk>



UHPC

STONE SEAT